

Creating Space

Creating a Space Cushion While Driving this Christmas.

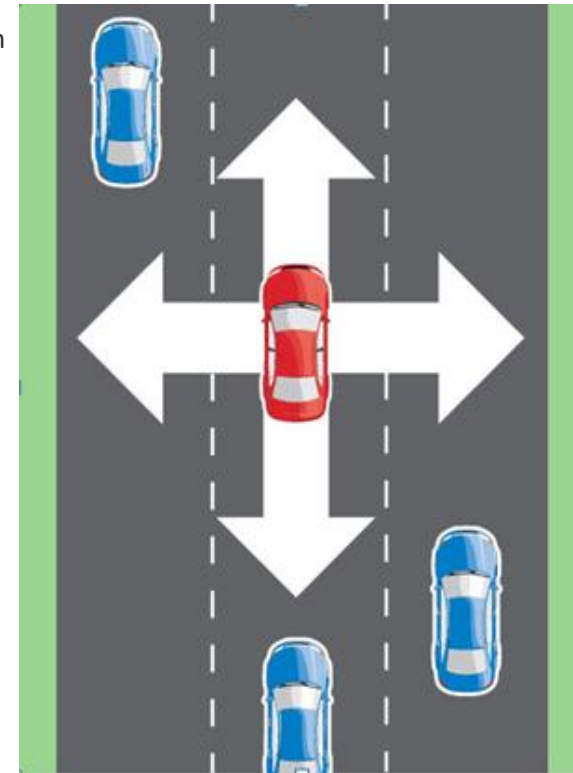
Keeping enough distance from other vehicles will ensure you have enough room to manoeuvre when you are behind the wheel.

To manage the road space around your car, you need to first control speed with good accelerator control, positioning the vehicle within the lane and use your vision to help communicate with other road users. This extra space will help you move or manoeuvre in case of an emergency or hazardous situation.

When driving in congested traffic, try to maintain a space cushion in the front and on at least one side. In these situations without an adequate space cushion on all sides, you must be extra alert and use a wider mirror set up. When traffic thins out, you can re-establish the space cushion all around your vehicle.

- ✓ Keep at least a three-second following distance in front of you – four or five seconds when towing or in inclement weather.
- ✓ If another vehicle is tailgating you, use your indicator and change lanes, pull over to the road shoulder when safe to do so.
- ✓ If a driver near you is driving erratically or aggressively, put distance between you and the other driver by slowing down or changing lanes.
- ✓ Be aware of the road ahead of you, always be on the lookout for potential hazards well ahead of you, be prepared to lift off the accelerator when potential situations arise.
- ✓ Braking needs to be done early, gently and sooner than you think.
- ✓ Learn the limits of your braking system in a safe environment before you head away.
- ✓ Use Google Maps to pre-plan your trips and use GPS navigation to help better planning.
- ✓ Stop regularly to keep yourself refreshed, if you have more than one driver swap and share the driving load.
- ✓ Up skill your driving with a good quality driver training program with ADI.

Remember when you are travelling at 100km/h you are travelling at 28 meters per second, with a reaction time of 2 seconds (56 meters) and braking distance of the car (56 meters) so it will take up to 112 meters to stop on tarmac.



Have a Merry Christmas and Drive Safe this Festive Season

