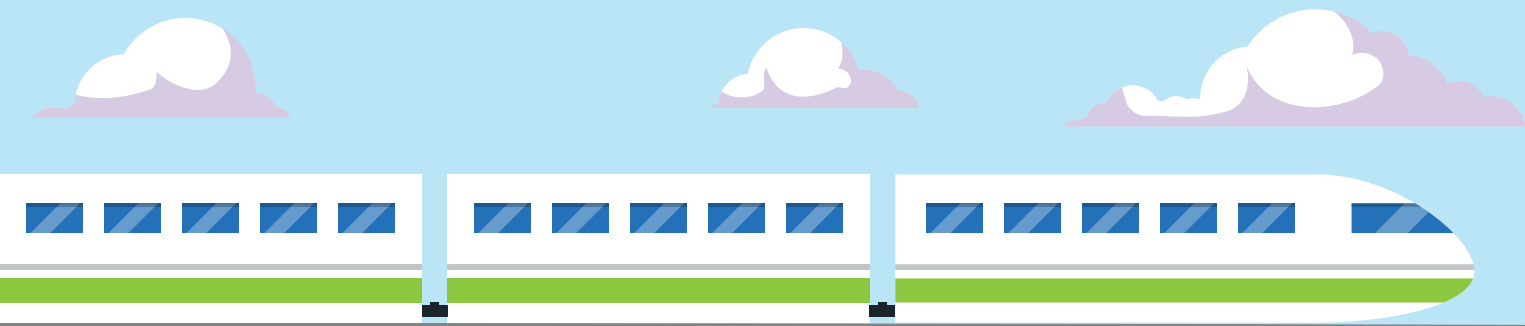


PARTNERSHIP PROGRAM

SAFETY AT LEVEL CROSSINGS

QUICK FACTS



Statistics

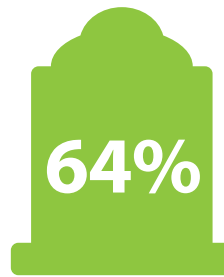


Motor vehicle and train collisions at level crossings remains one of Australia's biggest risks for rail operations.

Source: Level Crossing Accidents in Australia, ITSIR (2011)



The annual cost of level crossing crashes to society is estimated at approximately **\$116 million in 2010.**



Fatal collisions between vehicles and trains are most common. 64% cars and 23% trucks.

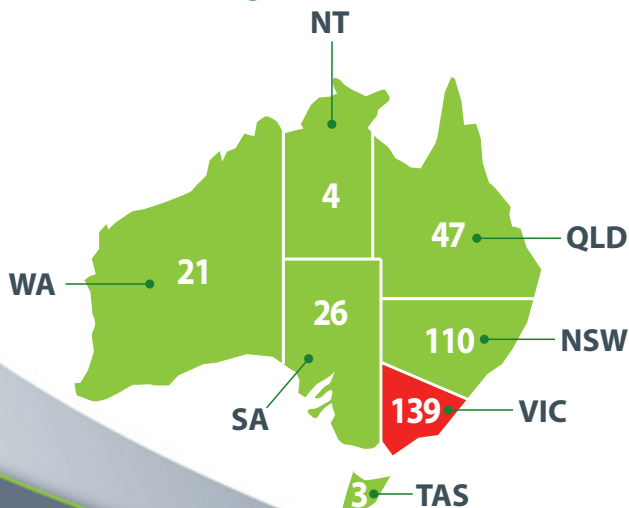
Source: Railway Level Crossing Safety, CARRS-O (2018)



It can take up to **2km** for a loaded freight train to stop in an emergency

Source: Level Crossing Safety, Transport and Main Roads Qld (2018)

Fatalities at levels crossings across Australia from 2002-2012



Source: Deaths and injuries will continue at level crossings without major changes, experts, Carey (2014)

Common factors in driver error at level crossings

- Difficulty in **gauging the time and space required** to cross safely
- **Risk-taking behaviours** e.g: trying to 'beat the train' to avoid frustrating delays and meet unrealistic delivery schedules
- **Complacency** due to familiarity with the travel route
- **Not driving according to the conditions**
- **Distraction**
- **Sighting limitations**
- **Operational aspects** of heavy road vehicles
- **Driver impairment**
- **Ignoring warning devices**
- **Crossing without due attention** to the conditions in front of them

Source: Railway Level Crossing Safety, CARRS-O (2018)
Level Crossing Safety, Transport and Main Roads Qld (2018)