

PARTNERSHIP PROGRAM

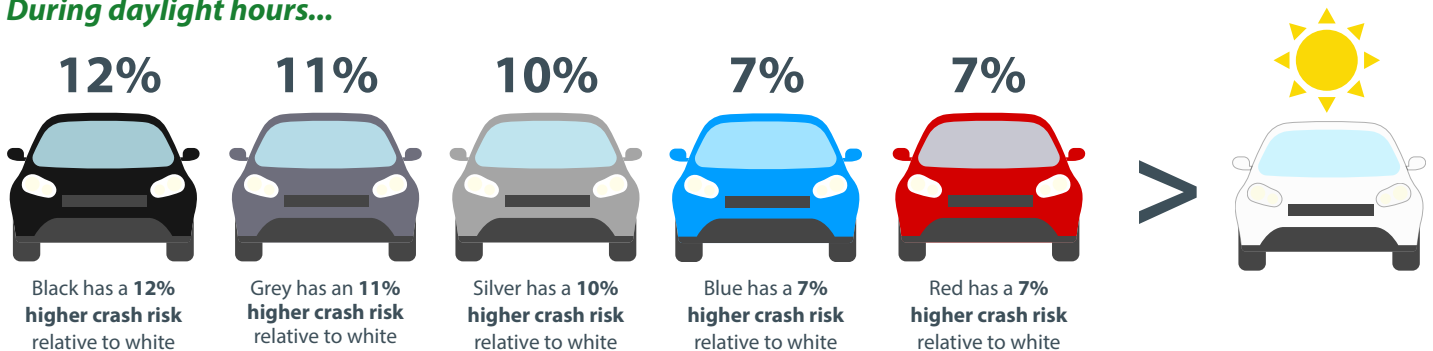
THE EFFECT OF CAR COLOUR ON CRASH RISK QUICK FACTS

What colours have a higher risk of crashes?

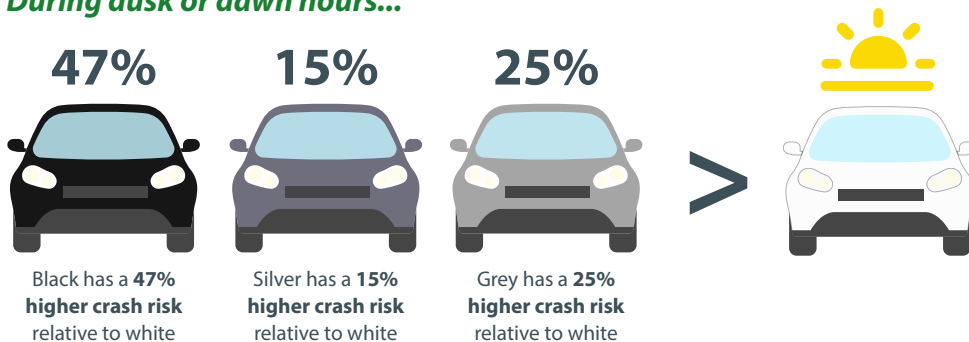
In a study undertaken by the Monash University Accident Research Centre (MUARC) the following was concluded:

Colours on the lower visibility index have a higher risk of crashes, and a higher risk of more severe crashes.

During daylight hours...



During dusk or dawn hours...



Sources: [Condon, M. \(2013\) Dark cars a safety hazard report. ABC](#)

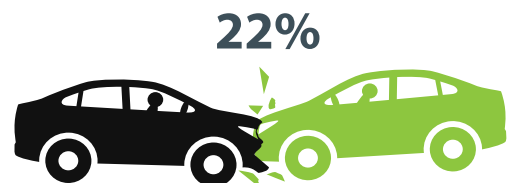
Tips

Daytime running lights go a long way to compensating for the **poor visibility of darker cars**. If you have a dark car, make sure you have your **headlights on, on low beam, in poor light conditions**.



Sources: [Cairney, P & Styles, T. \(2003\) Review of the literature on daytime running lights](#)

Dark cars



In 2004 the NRMA released research that showed dark cars were **22%** more likely to be involved in car accidents



The claims paid out for these accidents were **30%** more expensive than average claims, indicating the accidents were often more serious

Sources: [Road Safety Commission \(2018\) Vehicle Safety, Government of Western Australia](#)