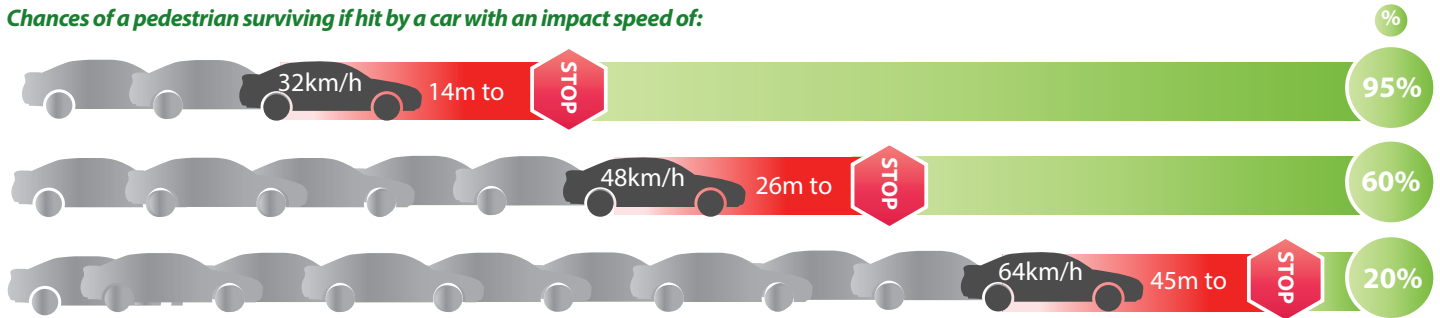


Stopping distance

Chances of a pedestrian surviving if hit by a car with an impact speed of:



Source: Figure 38, P118, Complete Streets Chicago, Department of transportation, designs guidelines 2013 edition

Stopping distance factors:



Driver

- Attention
- Fatigue
- Vision
- Impairment
- Driver age & experience
- Hazard perception ability



Vehicle

- Vehicle age
- Type & condition of brakes
- Type & condition of tyres
- Safety features of vehicle
- Vehicle weight

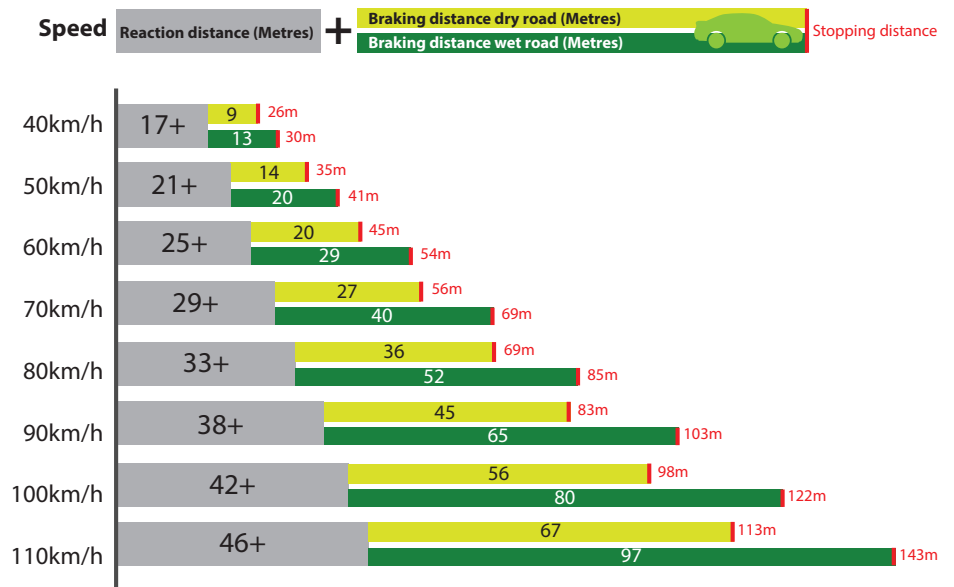


Environmental

- Road surface
- Road gradient
- Road alignment
- Weather conditions (wet/dry)

Source: Stopping distances: Speed and braking | Transport and motoring | Queensland Government

How long it takes to stop (driving an average family car):

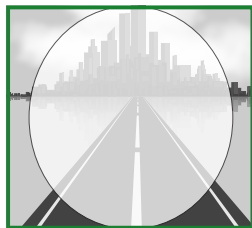


Source: Stopping distances: Speed and braking | Transport and motoring | Queensland Government

Tunnel vision



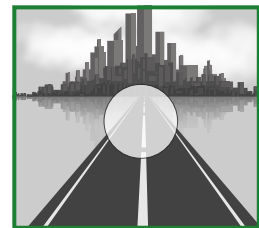
16-24km/h



32-48km/h



48-64km/h



72km/h

As speed increases, peripheral vision decreases.

Source: <http://www.nrsp.org.au/Pool/Resources/speeding-fs.pdf>