

TREAD DEPTH SURVEY RESULTS



Over **100,000** tyres surveyed at the point of replacement

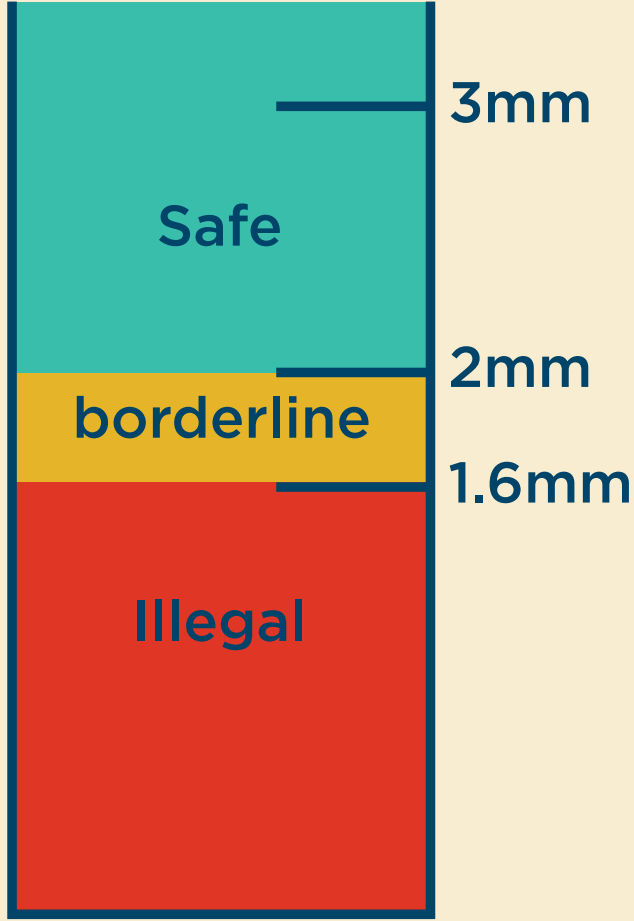


TYRE SERVICE



Over **800** tyre outlets participated

WHAT WE CHECKED FOR:

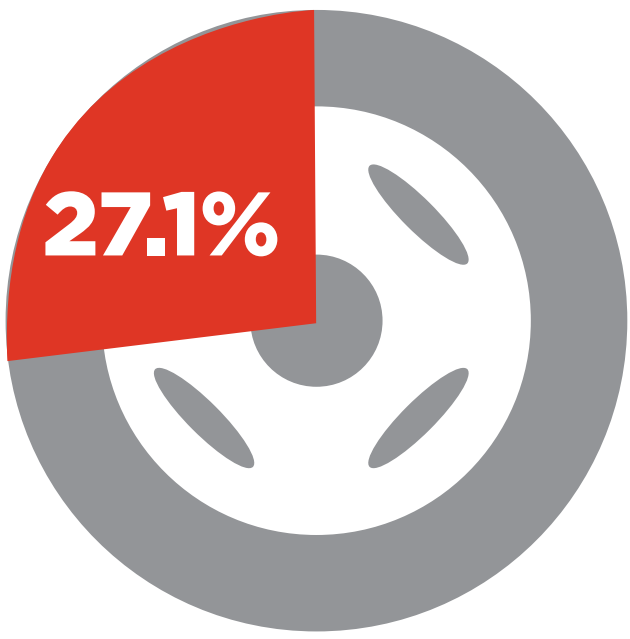


0.4mm

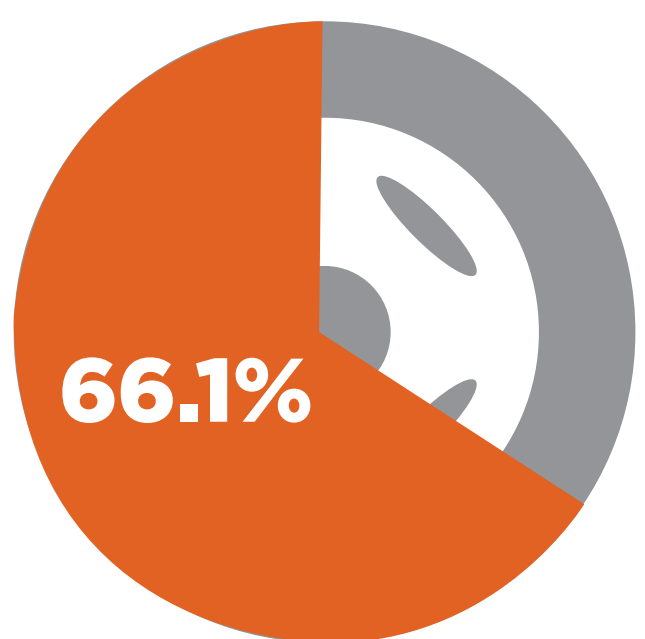
the difference between illegal and borderline



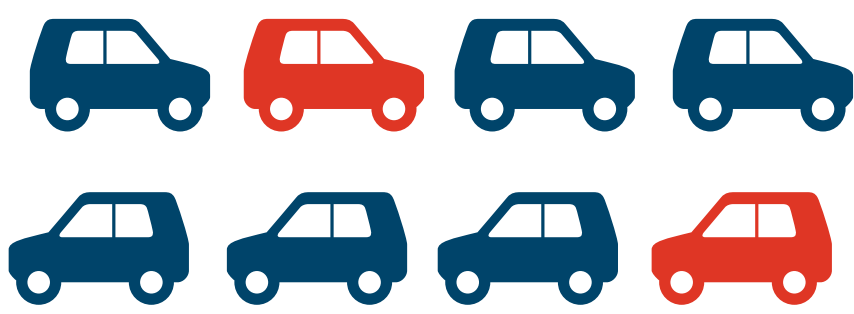
which is half the thickness of a bank card



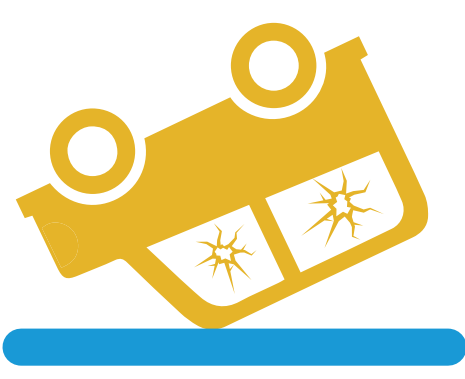
27.1% of tyres were illegal = nearly 10 million illegal tyres



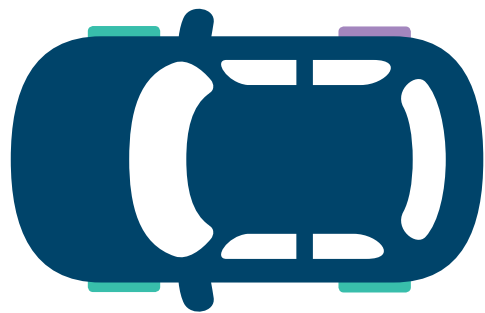
66.1% of tyres had a tread depth of 2mm or below = nearly 24 million tyres



1 in 4 vehicles could have illegal tyres this year



80,000+ tyre related incidents reported on Highways England's roads (04/13 - 03/15)



1

average tyre per vehicle changed every year



35,300,000 cars and vans on Britain's roads

ARE YOU TYRE SAFE? CHECK YOUR TREAD TODAY!

SAFE TYRES SAVE LIVES
tyresafe.org

