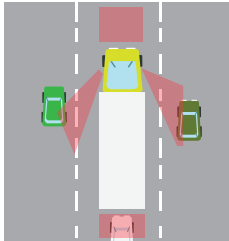


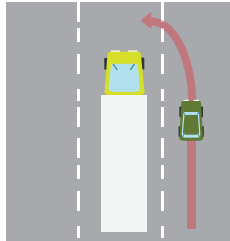
# DON'T CUT IN FRONT OF TRUCKS

## QUICK FACTS

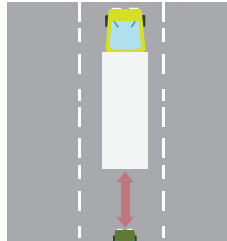
### Tips for sharing the road with trucks



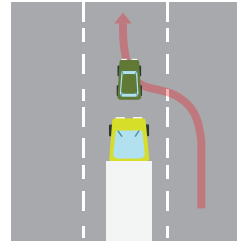
**1. Avoid blind spots**  
(see our fact sheet on "if you can't see my mirrors I can't see you")



**2. Pass trucks with caution** on the right hand side of a two lane road when safe to do so



**3. Do not linger** near a truck – following distance should be at least 4 seconds



**4. Do not cut in front** of trucks – trucks need a greater distance to stop than cars and will slow down well before traffic lights to avoid a complete stop

Sources: <http://visually/10-tips-sharing-road-trucks>

**WHY?**

### Crashes and accidents



**80%** of fatal multiple vehicle crashes involving trucks are **NOT** caused by the truck

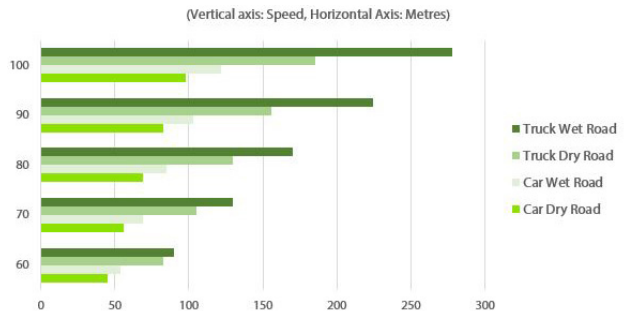


**56%** of fatalities in accidents involving trucks are the occupant of the light vehicle

Sources: [http://bitre.gov.au/publications/2016/files/is\\_078.pdf](http://bitre.gov.au/publications/2016/files/is_078.pdf)

### Truck stopping distances

Trucks are bigger and heavier than cars so they take longer to stop safely, as can be seen from the graph (the bigger the truck, the more stopping distance it needs)



Trucks can take up to **40%** longer to stop than cars

Sources: <https://www.qld.gov.au/transport/safety/road-safety/driving-safely/stopping-distances/graph/index.html>  
<http://www.safetydriven.ca/posters/Dont-Cut-in.jpg>